

**RECQL4 Antibody(C-term)**  
**Affinity Purified Rabbit Polyclonal Antibody (Pab)**  
**Catalog # AP19458b****Specification**

---

**RECQL4 Antibody(C-term) - Product Information**

Application	IHC-P, WB,E
Primary Accession	<a href="#">O94761</a>
Other Accession	<a href="#">NP_004251.3</a>
Reactivity	Human, Mouse
Host	Rabbit
Clonality	Polyclonal
Isotype	Rabbit IgG
Calculated MW	133067
Antigen Region	1134-1162

**RECQL4 Antibody(C-term) - Additional Information****Gene ID** 9401**Other Names**

ATP-dependent DNA helicase Q4, DNA helicase, RecQ-like type 4, RecQ4, RTS, RecQ protein-like 4, RECQL4, RECQ4

**Target/Specificity**

This RECQL4 antibody is generated from rabbits immunized with a KLH conjugated synthetic peptide between 1134-1162 amino acids from the C-terminal region of human RECQL4.

**Dilution**

IHC-P~~1:100

WB~~1:2000

E~~Use at an assay dependent concentration.

**Format**

Purified polyclonal antibody supplied in PBS with 0.09% (W/V) sodium azide. This antibody is purified through a protein A column, followed by peptide affinity purification.

**Storage**

Maintain refrigerated at 2-8°C for up to 2 weeks. For long term storage store at -20°C in small aliquots to prevent freeze-thaw cycles.

**Precautions**

RECQL4 Antibody(C-term) is for research use only and not for use in diagnostic or therapeutic procedures.

**RECQL4 Antibody(C-term) - Protein Information****Name** RECQL4

**Synonyms** RECQ4 {ECO:0000303|PubMed:9878247}

**Function** An ATP-dependent DNA helicase which unwinds dsDNA with a 3'- overhang in a 3'-5' direction (PubMed:[28653661](#)). Does not unwind more than 18 bp of dsDNA (PubMed:[28653661](#)). May modulate chromosome segregation. The N-terminal domain (residues 1-54) binds DNA Y-shaped DNA better than ss- or dsDNA (PubMed:[22730300](#)). The core helicase domain binds ssDNA (PubMed:[22730300](#), PubMed:[28653661](#)).

**Cellular Location**

Cytoplasm. Nucleus

**Tissue Location**

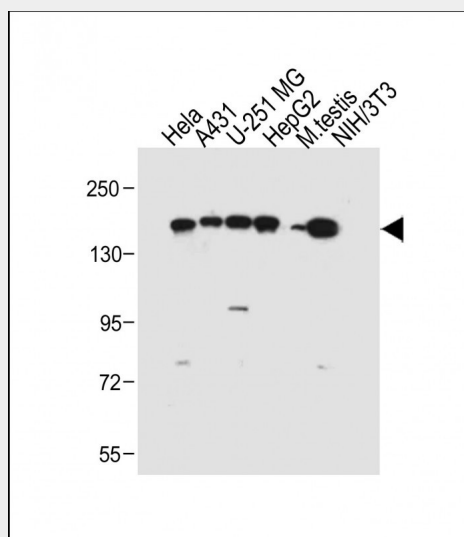
Ubiquitously expressed, with highest levels in thymus and testis.

**RECQL4 Antibody(C-term) - Protocols**

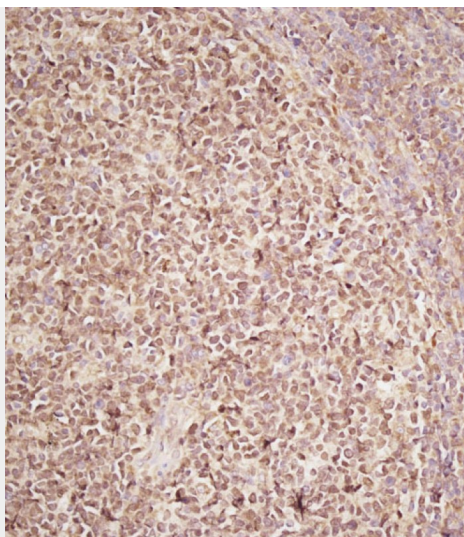
Provided below are standard protocols that you may find useful for product applications.

- [Western Blot](#)
- [Blocking Peptides](#)
- [Dot Blot](#)
- [Immunohistochemistry](#)
- [Immunofluorescence](#)
- [Immunoprecipitation](#)
- [Flow Cytometry](#)
- [Cell Culture](#)

**RECQL4 Antibody(C-term) - Images**



All lanes : Anti-RECQL4 Antibody(C-term) at 1:2000 dilution Lane 1: HeLa whole cell lysate Lane 2: A431 whole cell lysate Lane 3: U-251 MG whole cell lysate Lane 4: HepG2 whole cell lysate Lane 5: Mouse testis tissue lysate Lane 6: NIH/3T3 whole cell lysate Lysates/proteins at 20 µg per lane. Secondary Goat Anti-Rabbit IgG, (H+L), Peroxidase conjugated at 1/10000 dilution. Predicted band size : 133 kDa Blocking/Dilution buffer: 5% NFDM/TBST.



Immunohistochemical analysis of AP19458B on paraffin-embedded Human tonsil tissue. Tissue was fixed with formaldehyde at room temperature. Heat induced epitope retrieval was performed by EDTA buffer (pH9. 0). Samples were incubated with primary antibody(1:100) for 1 hour at room temperature. Undiluted CRF Anti-Polyvalent HRP Polymer antibody was used as the secondary antibody.

#### **RECQL4 Antibody(C-term) - Background**

The protein encoded by this gene is a DNA helicase that belongs to the RecQ helicase family. DNA helicases unwind double-stranded DNA into single-stranded DNAs and may modulate chromosome segregation. This gene is predominantly expressed in thymus and testis. Mutations in this gene are associated with Rothmund-Thomson, RAPADILINO and Baller-Gerold syndromes. [provided by RefSeq].

#### **RECQL4 Antibody(C-term) - References**

Rossi, M.L., et al. DNA Repair (Amst.) 9(7):796-804(2010)  
Singh, D.K., et al. Aging Cell 9(3):358-371(2010)  
Thangavel, S., et al. Mol. Cell. Biol. 30(6):1382-1396(2010)  
Xu, X., et al. EMBO J. 28(19):3005-3014(2009)  
Im, J.S., et al. Proc. Natl. Acad. Sci. U.S.A. 106(37):15628-15632(2009)